

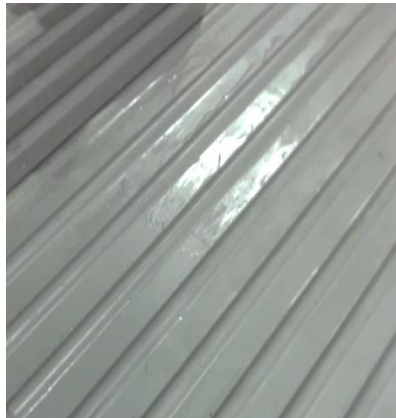
- WESTERN RAILWAYS - TRIALS & EVALUATION OF THERMACOOL 0.3M FR COATINGS



- Location - Mumbai Central - Coach Care Centre
- Train - Shatabdi Express
- Train no - 12009
- Roof Surface Area - Approx. 900 Sq.Ft. / Coach



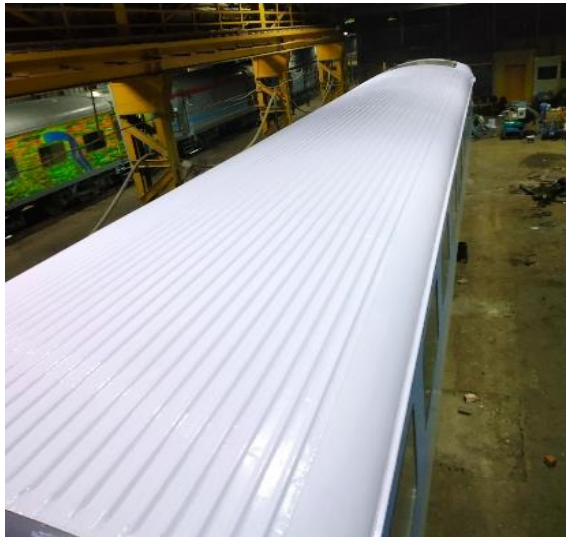
ADEQUATE SURFACE
PREPARATION



THERMACOOL STP FR
BASE COAT



APPLICATION OF FIRST COAT OF
THERMACOOL 0.3M FR



AFTER 2 COATS OF
THERMACOOL 0.3M FR



ROOF TOP DIFFERENCE : 24°C



21st Oct 2018
11.30am
DFT: 130micron STP + 120 micron 0.3M
Total DFT: 250 microns



पश्चिम रेलवे
Western Railway